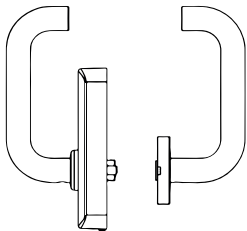




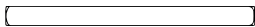
notice de montage

contenu

1 bequille



1 tige carré



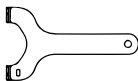
1 clé en L M1.5



1 clé en L M3



1 clé à
molette



1 carte de
construction



1 plan
d'installation



1 vis allen



2 goujons



1 vis autotaraudeuse



1 vis Phillips



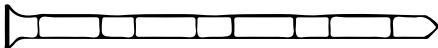
1 vis de blocage



2 vis de pressions
cylindriques

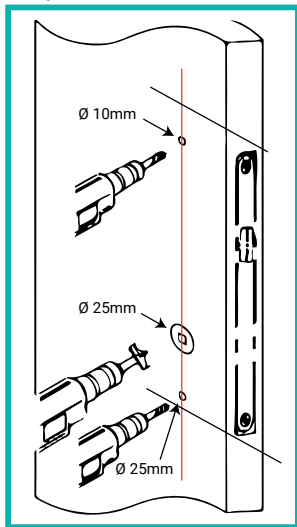


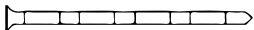
2 vis en bambous



préparation

- 1 Percer le trou selon le plan d'installation



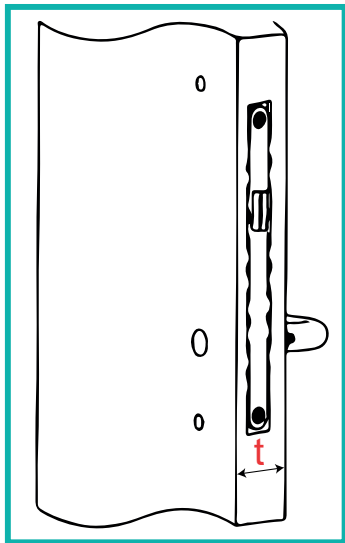


$t - 10\text{mm}$



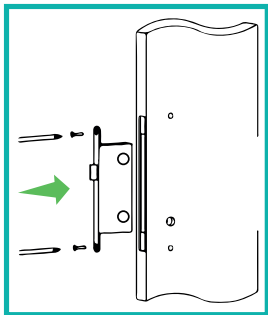
$t + 10\text{mm}$

- 2** Mesurer l'épaisseur de la porte, couper la tige carrée et les vis en bambou

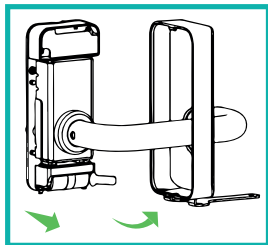


préparation

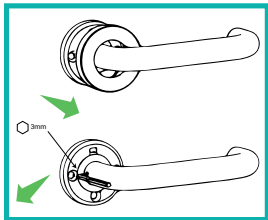
3 Installer le corps de la serrure



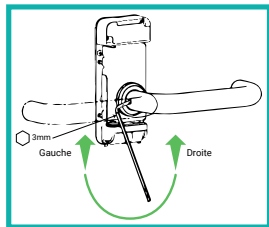
4 Retirer la protection de la batterie



5 Retirer le couvercle intérieur

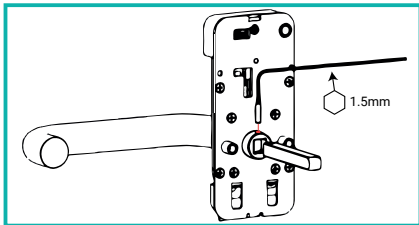


6 Choisir le sens de la poignée

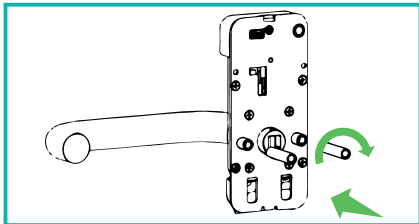


préparation

7 Installer la tige carré

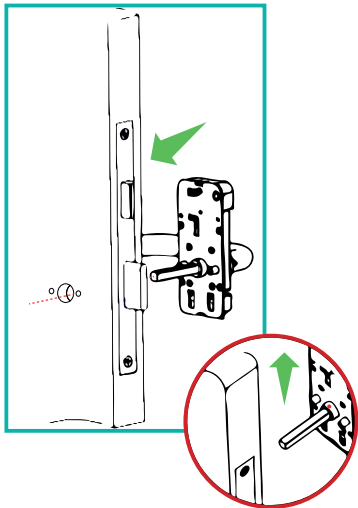


8 Installer le goujon si nécessaire

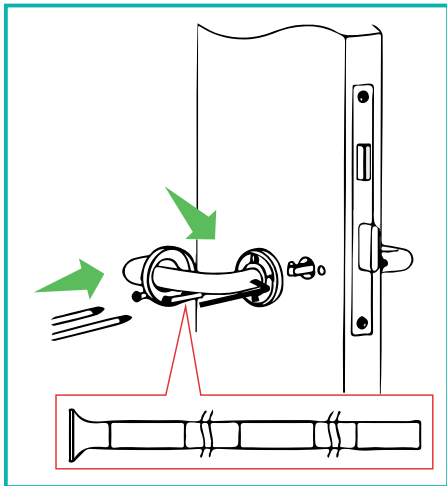


installation

- 1 Lorsque la vis est tournée vers le haut, insérer la tige carré dans le corps

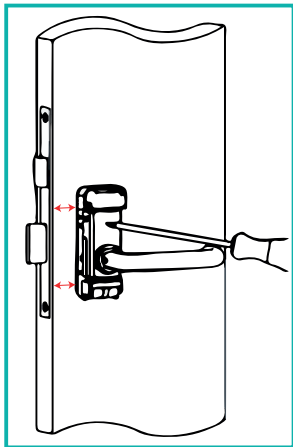


2 Installer les composants internes et les visser

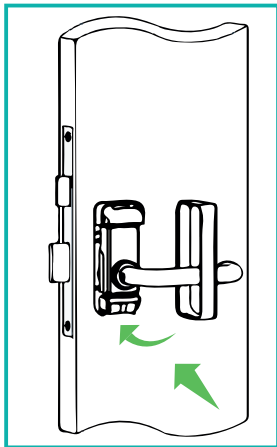


installation

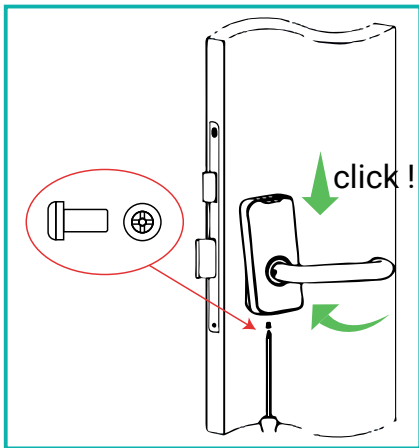
3 Vous assurer qu'il est bien droit et le visser



4 Remettre le couvercle

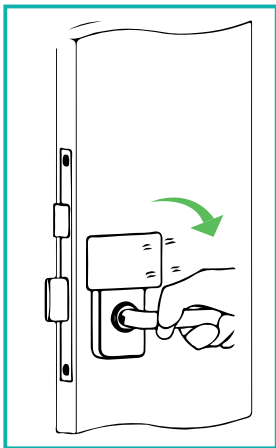


5 Installer le couvercle et le visser



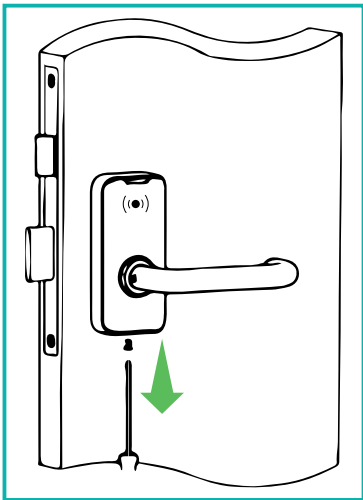
installation

- 5 Tester l'installation avec la carte de construction



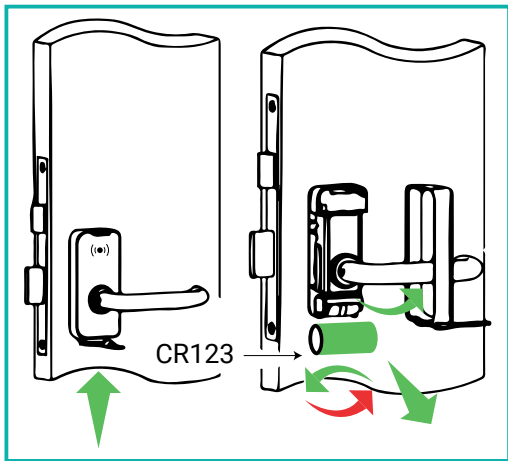
changement de piles

1 Enlever la vis



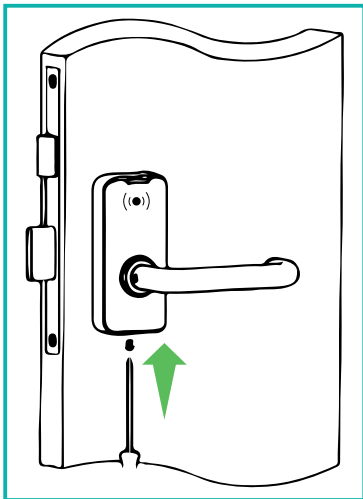
changement de piles

- 2 Retirer le couvercle extérieur et le remplacer par une nouvelle pile



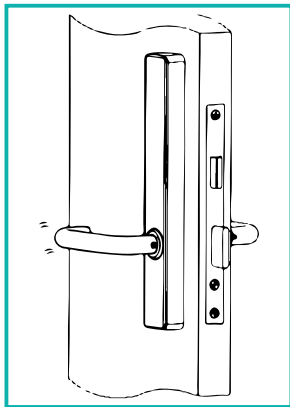
changement de piles

- 1 Remettre le couvercle, puis la vis

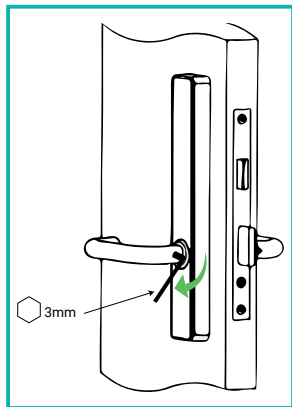


entretien

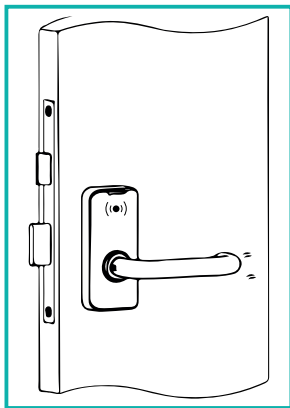
- 1** Si la poignée intérieur tremble



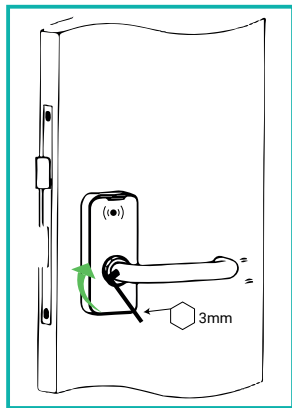
- 2** Serrer les vis pour maintenir le niveau



1 Si la poignée extérieure tremble



2 Serrer les vis pour maintenir le niveau



www.elocky.com

+33 (0)5.35.54.92.00
contact@elocky.com