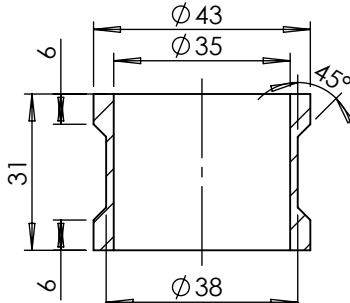
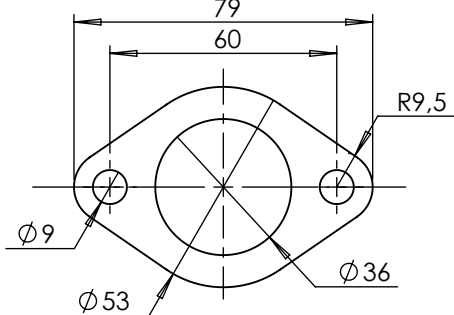


Db-killer N°59  
Cod.3014228801



Bushing  
Cod.206279



Flange Sp.6 mm  
Cod.206285

E13 92R - 02 10423

Carbon clamp FM4S  
Cod.307572505

Plain washer  $\phi 6 \times \phi 12$   
Cod.200291

Spherical cap nut  
M6 Cod.201181

S.S. Bracket  
PROD. cod.3014298501  
PURCH. cod.206533

Pipe s.s.  
Cod.3014298210

2x Knurled collar nut  
M8 Cod.200298

CATALYTIC  
CONVERTER

4 S.s. Busher  
Cod.206279

Pipe N°1  
Cod.3014298201

LV ONE EVO silencer RHS  
stainless steel  
Cod.3014228481

4 S.s. Flange  
Cod.206285

"OPTIONAL"  
Cod.5683

Alluminium  
spacer  
 $\phi 27 \times 8.5$   
Cod.204321

Allen screw  
M8X45 T.C.E.I.  
Cod.201450

Allen screw  
M8X20 T.C.E.I.  
Cod.200722

Pipe s.s. 4/2/1  
Cod.3014298206

6x Short helical spring  
tensile Cod.303949001

Pipe N°4  
Cod.3014298204

Pipe N°3  
Cod.3014298203

Pipe N°2  
Cod.3014298202

### WARNING

it is advisable to optimize the carburation by remapping the stock ECU or by adopting an additional ECU unit.

## ART. 14298EK

### HONDA CB 650 R Neo Sport Cafè

(also fit 35kW version) (Fitting with original under cowl requires optional kit LeoVince Art.80004)

## FULL SYSTEM 4/2/1 - LV ONE EVO - STAINLESS S. - APPROVED