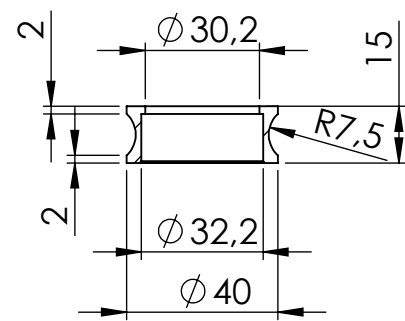


Flange aluminium. sp.8
cod.206606



Bushing s.s.
cod.206607

Allen screw M5X6
T.C.E.I.
Cod.201044

Db-Killer Ø 22
Cod.303430801

GP CORSA
Øi 54X240 RHS
Cod.303457473

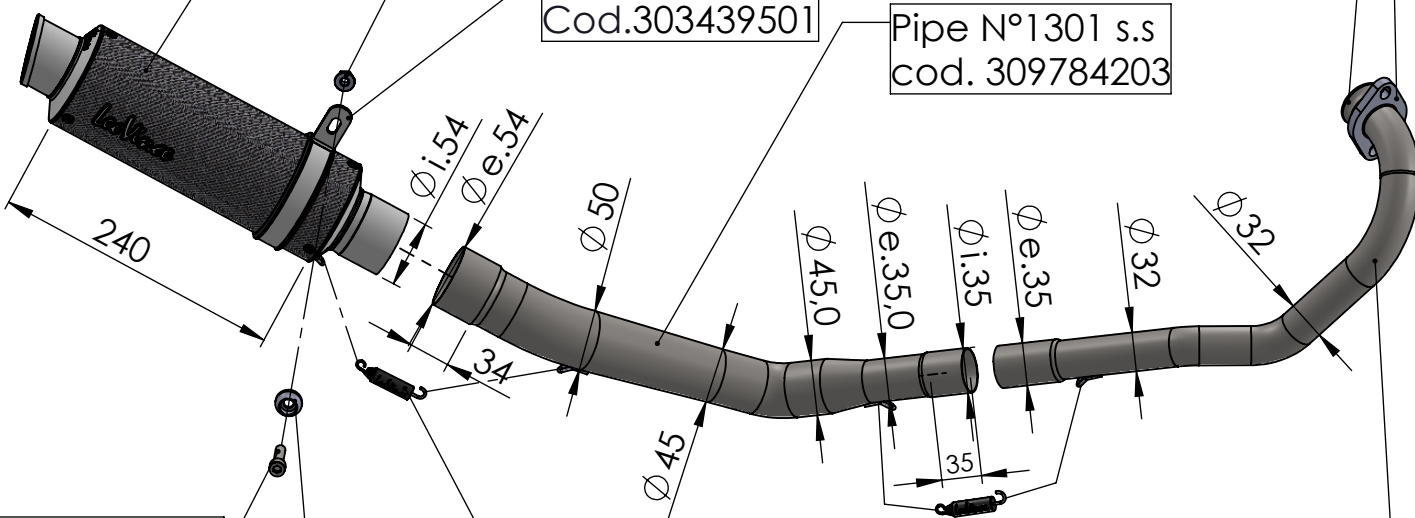
Flange
cod.206606

Knurled collar nut
M8 Cod.200298

Welded bushing S.s.
cod.206607

Silencer clamp
Cod.303439501

Pipe N°1301 s.s.
cod. 309784203



Allen screw M8X35
T.C.E.I.Z.B.
Cod.200319

Aluminium spacer
Ø22X8,5
Cod. 205090

2x Short helical
spring tensile
cod. 303949001

Pipe N°1300 s.s.
cod. 309784201

WARNING

it is advisable to optimize the carburation by remapping the stock ECU or by adopting an additional ECU unit.

ART. 9784

YAMAHA EXCITER 150 FI

FULL SYSTEM - GP CORSA - CARBON